



Fen

Stewardship Action Plan

Rare Plant Symposium - September 18, 2020

An innovative land trust funding Colorado schools since 1876.



COLORADO
State Land Board



*~1780s
America's Founders*

*~1860s
American Schoolchildren*

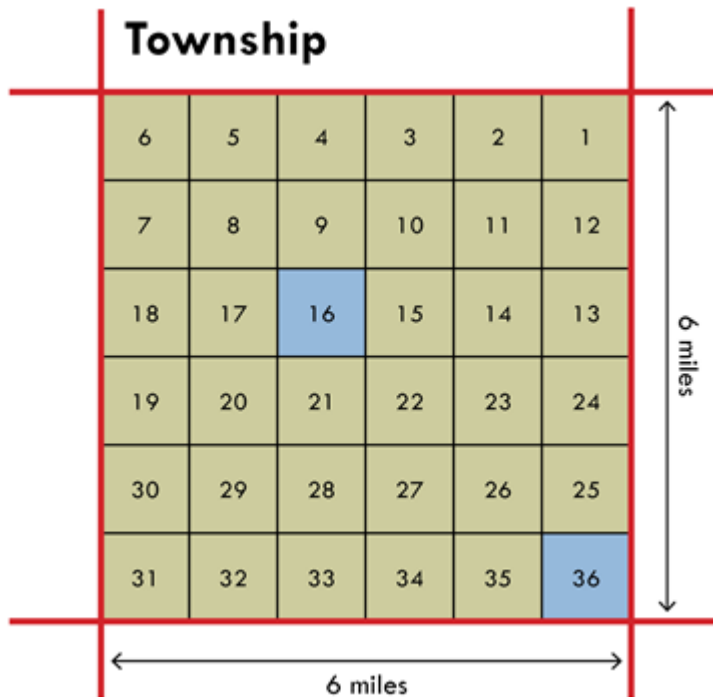


TRUST LAND HISTORY



COLORADO
State Land Board

The Colorado Enabling Act (1875): “sections 16 and 36 ... are hereby granted to said state for the support of common schools.”



~1900 schoolhouse
Gilpin, CO

agriculture



commercial real estate



ecosystem services



mining



recreation



renewable energy



rights-of-way



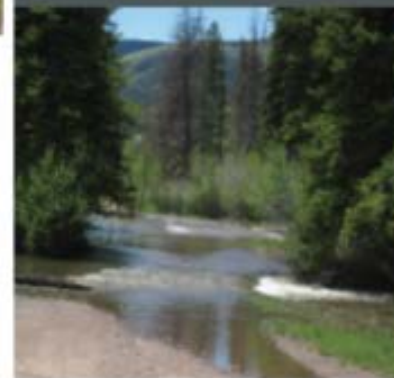
tower sites



oil and gas



water resources



Lines of Business

LEASING



COLORADO
State Land Board

\$1.7 Billion to Schools

\$717 million to BEST (school capital construction)

\$479 million to Permanent Fund (endowment for schools)

\$386 million to School Finance Act (CDE's operating budget)

(2008-2018)



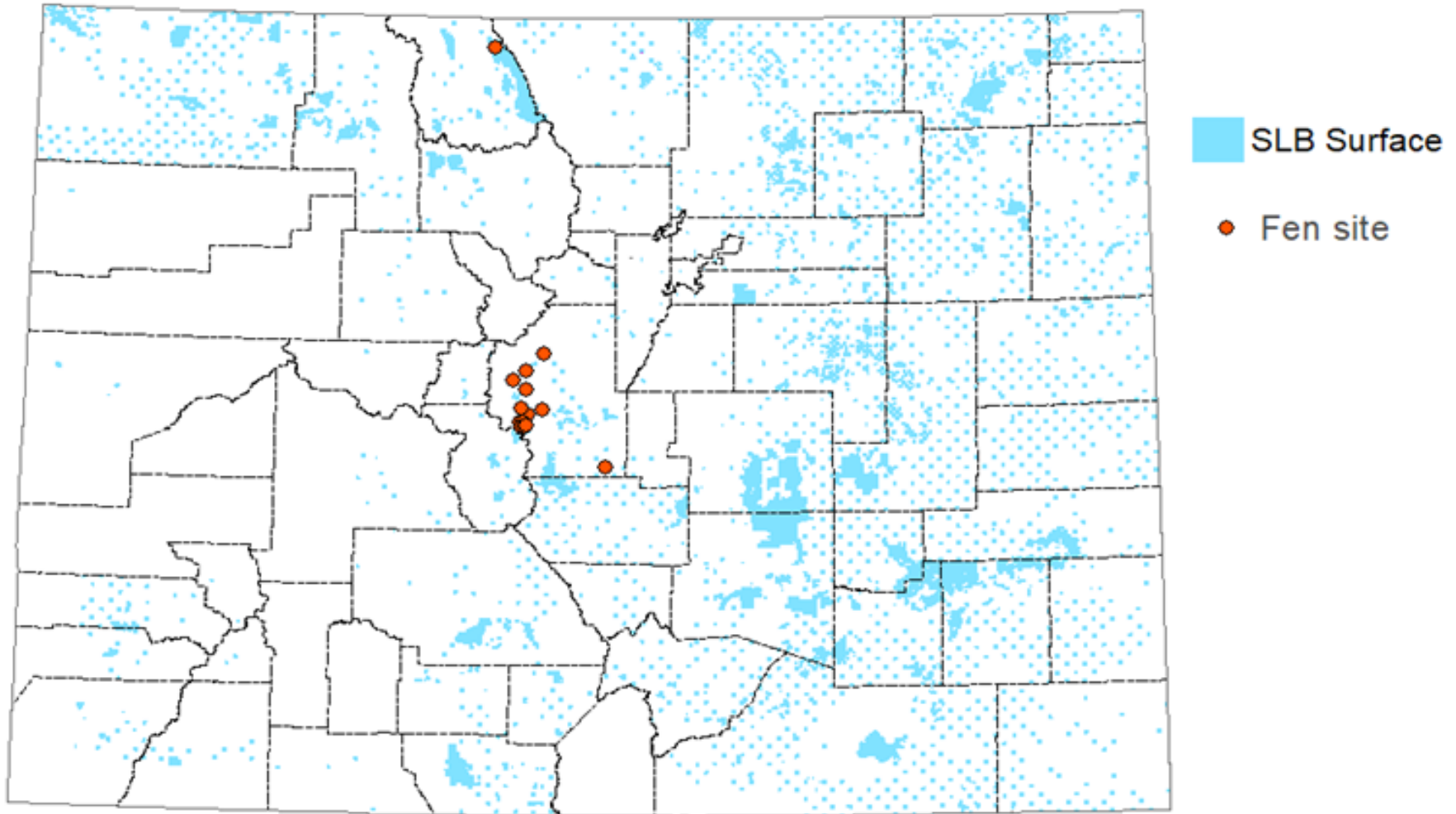
COLORADO
State Land Board



Responsible stewardship of a 20,000-year-old resource



Fens on State Trust Land

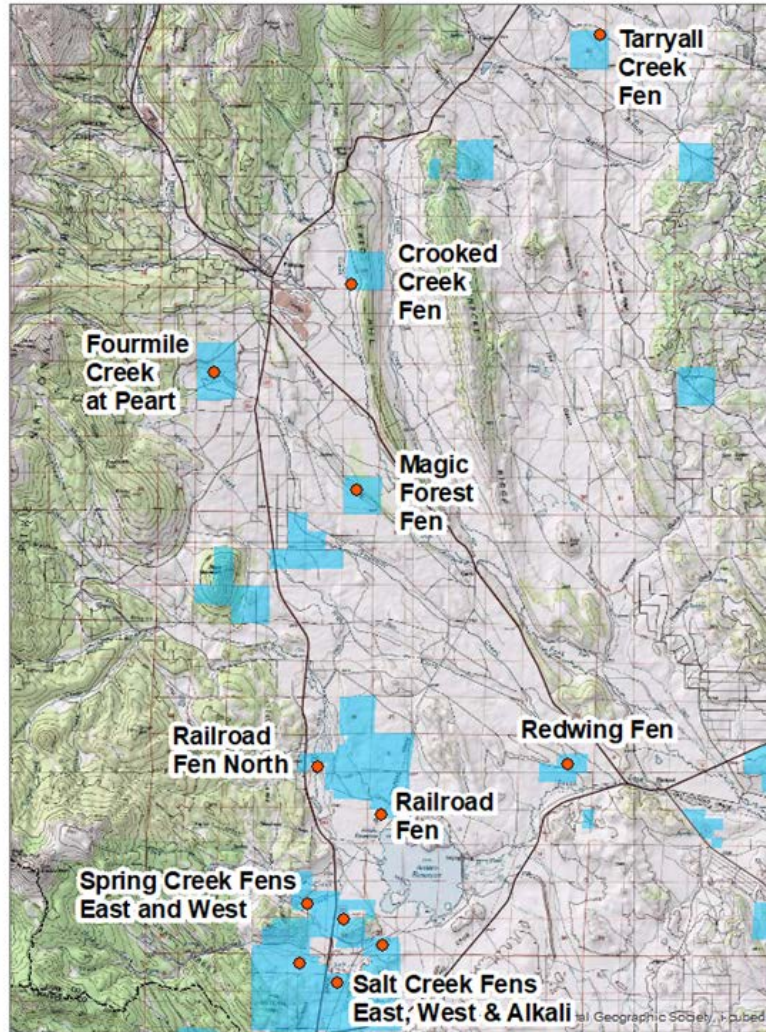


STATEWIDE LOCATION



COLORADO
State Land Board

Fens on State Trust Land in South Park, Park County



- SLB Surface
- Fen site



FENS IN SOUTH PARK



COLORADO
State Land Board



WHAT ARE FENS?



COLORADO
State Land Board



FLOATING PEAT MATS



COLORADO
State Land Board



Park Milkvetch - *Astragalus leptaleus* (G4S2)



Greenland Primrose-*Primula egaliksensis* (G4S2)



Little green sedge,
Carex viridula (G5S1)



Few-flowered Ragwort
Packera pauciflora
(G4G5/S1)



Saline phlox - *Phlox kelseyi* (G4S1)



Silver willow-*Salix candida* (G5S2)



Marsh felwort-
Lomatogonium rotaum
(G5S2)



Pale blue-eyed grass-
Sisyrinchium pallidum (G3S2)

RARE PLANTS



COLORADO
State Land Board



HISTORIC IMPACTS



COLORADO
State Land Board



DITCHING & DRAINING



COLORADO
State Land Board



CONVERSION TO HAY FIELDS



COLORADO
State Land Board



SALE OF WATER RIGHTS



COLORADO
State Land Board



LIVESTOCK WATER SOURCE



COLORADO
State Land Board



HOOF SHEAR & TRAMPLING

- 
- Resource (Fen) Conservation
 - Resource Development
 - Outreach

FEN SAP: 3 GOALS



COLORADO
State Land Board

- **Map fen** sites
- **Restore ecological integrity**
- **Monitor changes**
- Implement **adaptive management**



- Improve **grazing management**
- Improve **recreation management**
- **Prevent negative impacts** of new leases
- Dedicate **financial resources** to achieve goals



- Improve **lessee understanding** of the ecological importance of fens
- **Collaborate with lessees** on Fen Enhancement Plans
- Involve **experts & stakeholders**
- Document and share **learning outcomes**



Questions/Comments



COLORADO
State Land Board